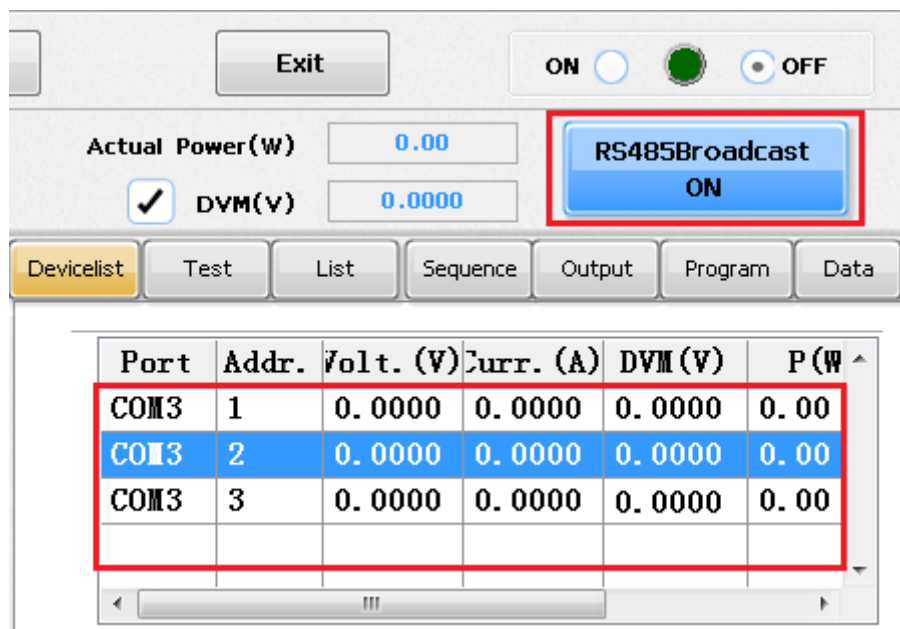




## Sync Output Function on APM DC Sources

During the test of production, there are several of ways to test product performance. Some customers require multiple power source sync output different waveform. For this requirement, APM design below two solutions.

### 一. Software control

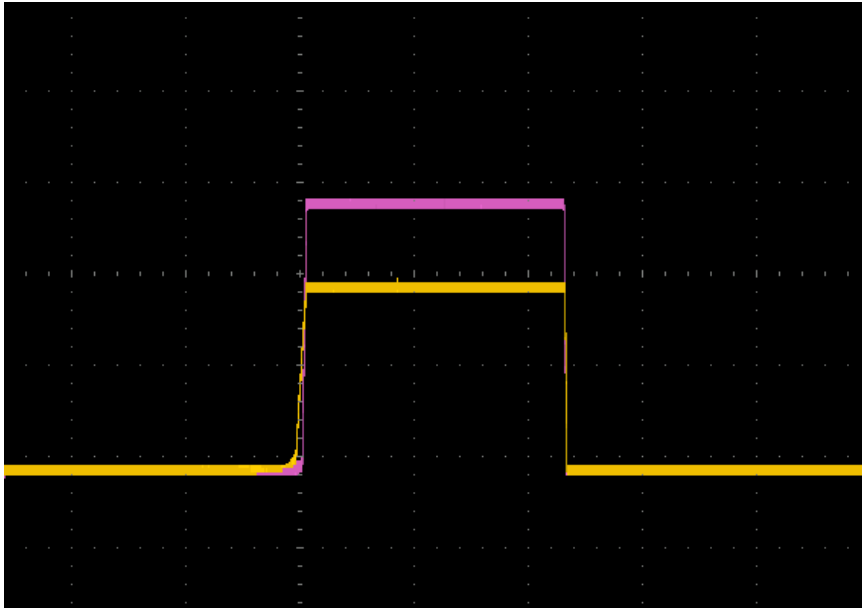


Monitoring software of this series power source add global control function. With RS485 communication, it is available to connect 30 units of different models and there are two ways to set output parameters:

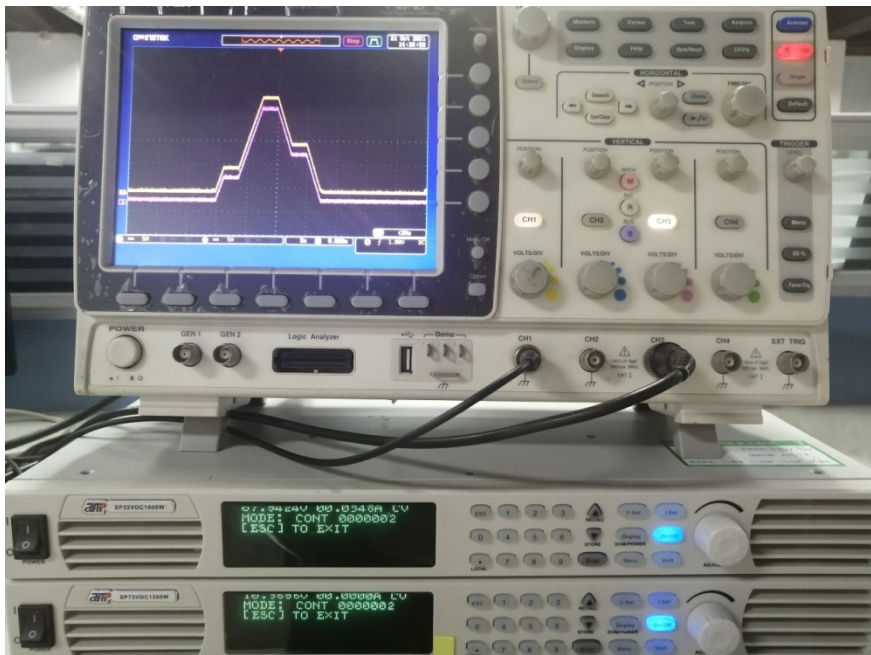
1. Set output parameters of first power source. Other power sources sync output setting parameters of first power source.
2. 30 units of power source set different voltage and current parameters respectively and then sync output.



全天科技  
APM TECHNOLOGIES



## 二. Command control



Via serial pot test tool, send output parameter to each power source. Using global command CALL to realize control multiple power source output.

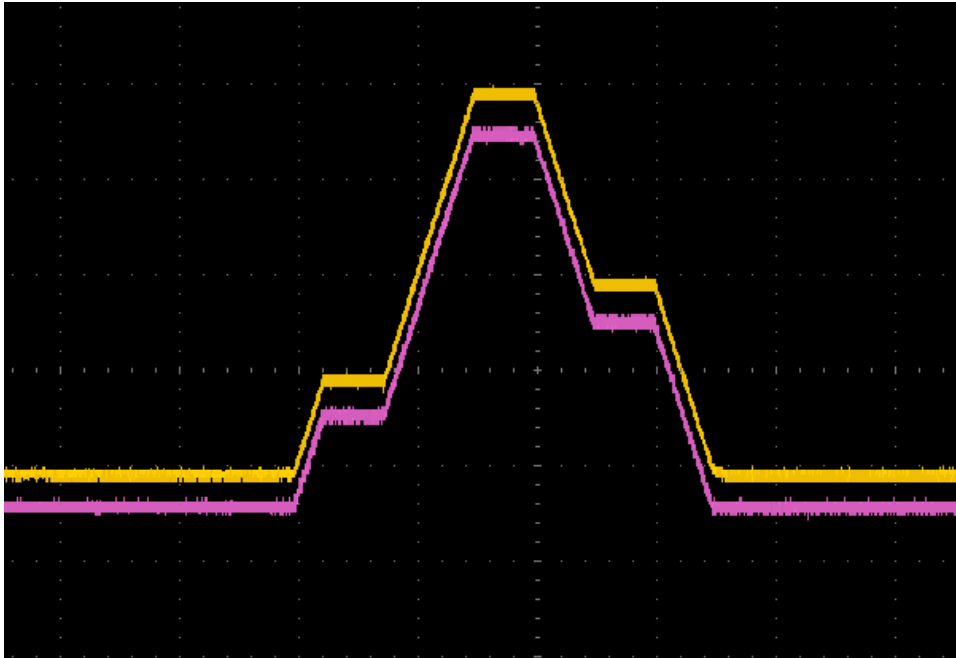
At the meanwhile, edit list waveform of each power source via command control.



全天科技  
APM TECHNOLOGIES



Then,using global command CALL to sync output List Waveform.



Diversity and flexibility of APM power source function satisfy requirement of market in real time. It help customer complete more and more product performance test.